



UTM
UNIVERSITI TEKNOLOGI MALAYSIA

UTMDIGITAL
Department of Digital Services

UTMDIGITAL SERVICES

Innovating Solutions





UTM
UNIVERSITI TEKNOLOGI MALAYSIA

UTMDIGITAL
Department of Digital Services



UTM Johor Bahru Campus

Department of Digital Services

Block D07,
Universiti Teknologi Malaysia,
81310 UTM Johor Bahru,
Johor.



UTM Kuala Lumpur Campus

Department of Digital Services

Universiti Teknologi Malaysia,
Jalan Sultan Yahya Petra,
54100 Kuala Lumpur.



UTM
UNIVERSITI TEKNOLOGI MALAYSIA

UTMDIGITAL
Department of Digital Services

UTMDigital is a support department that **offers and delivers ICT services for the university (staff and students), especially in ICT infrastructure, system development and academic/administrative activities.**



VISION

Digital University Driver

MISSION

Strengthening academia-centric service delivery through data-driven digital ecosystem



CORE FUNCTION OF UTMDIGITAL

Develop and implement new applications and upgrade existing applications that cover the core business of the University



Ensure that ICT infrastructure is always available to support the application platform developed



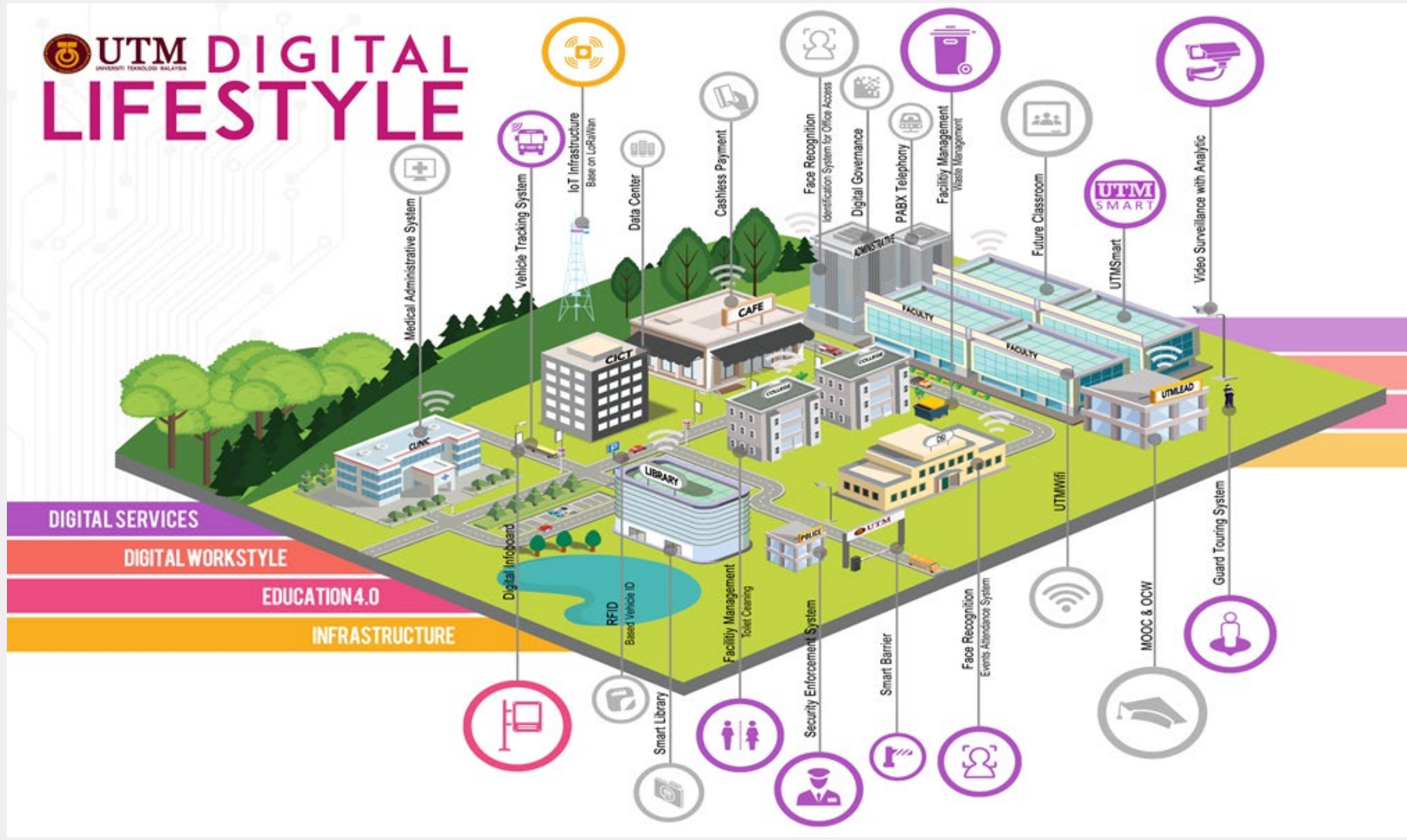
Support the implementation of Digital Lifestyles through development of latest innovation technology





UTM
UNIVERSITI TEKNOLOGI MALAYSIA

DIGITAL LIFESTYLE



DIGITAL SERVICES

DIGITAL WORKSTYLE

EDUCATION 4.0

INFRASTRUCTURE

Medical Administrative System

Vehicle Tracking System

IoT Infrastructure Base on LoRaWAN

Data Center

Cashless Payment

Face Recognition Identification System for Office Access

Digital Governance

PABX Telephony

Facility Management Waste Management

Future Classroom

UTM SMART

UTMSmart

Video Surveillance with Analytic

Digital Infoboard

RFID Based Vehicle ID

Facility Management Toilet Cleaning

Security Enforcement System

Smart Barrier

Face Recognition Events Attendance System

MOOC & OCW

Guard Touring System

UTMwifi



- 1 **UTMID**
- 2 **OFFICIAL EMAIL ACCOUNT (@graduate.utm.my)**
- 3 **UTM SYSTEMS – STUDENT PORTAL & UTMSMART**
- 4 **UTM LICENSED SOFTWARE**
- 5 **MICROSOFT 365 (@live.utm.my)**
- 6 **NETWORK**
- 7 **ICT POLICY**
- 8 **OTHER INFO**

HOW TO GET YOUR UTMID/ OFFICIAL EMAIL

WHAT IS UTMID?

- a. UTMID is a **unique identification (ID) assigned to a user to authenticate a user before accessing UTM network, ICT applications and services including UTMWiFi, MyUTM portal and UTMSmart.**
- b. UTMID is only available for **registered students.**
- c. UTMID is also used as an official email ID for students. You will have **yourutm@graduate.utm.my** as your email user id.
- d. In case you need to reset your UTMID password, you can do it at <http://utm.utm.my>

HOW TO GET YOUR UTMID & UTM OFFICIAL EMAIL ACCOUNT?

NEW STUDENT

- Your UTMID will be generated automatically upon completing the UTM offer acceptance process.
- An email notification from **utm@utm.my** will be sent to your **registered email account (the personal email account that you provided during the offer acceptance process).**

FORMER STUDENT / EXISTING STUDENT


- Use your existing UTMID

HOW TO RESET YOUR UTMID PASSWORD ?



SELF-RESET PASSWORD

<https://utmid.utm.my>


Self service password Email  Click here if you forgot your UTMID password.
Please provide your UTM official email (@graduate.utm.my)



Change your password

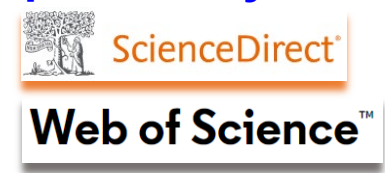
1 Enter your old password and choose a new one.

Login	<input type="text" value="Login"/>
Old password	<input type="password" value="Old password"/>
New password	<input type="password" value="New password"/>

 Change your UTMID password



**Online Databases
(UTM Library)**
<https://library.utm.my>



<https://my.utm.my>

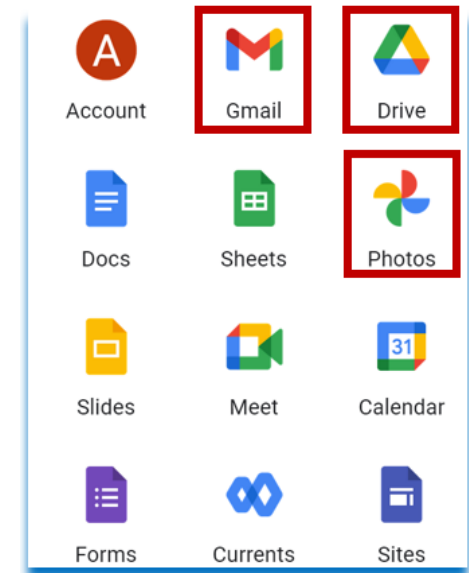
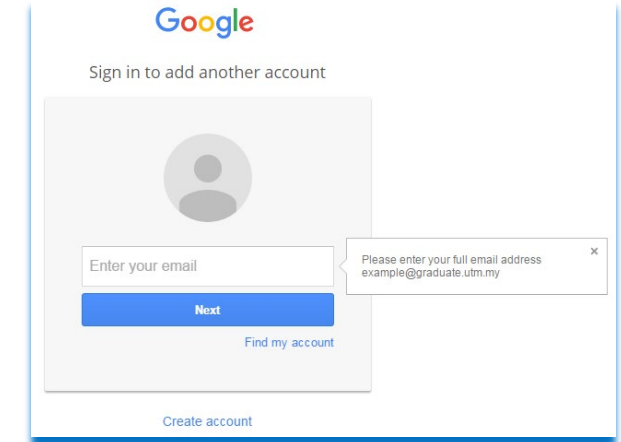
<https://vpn.utm.my>



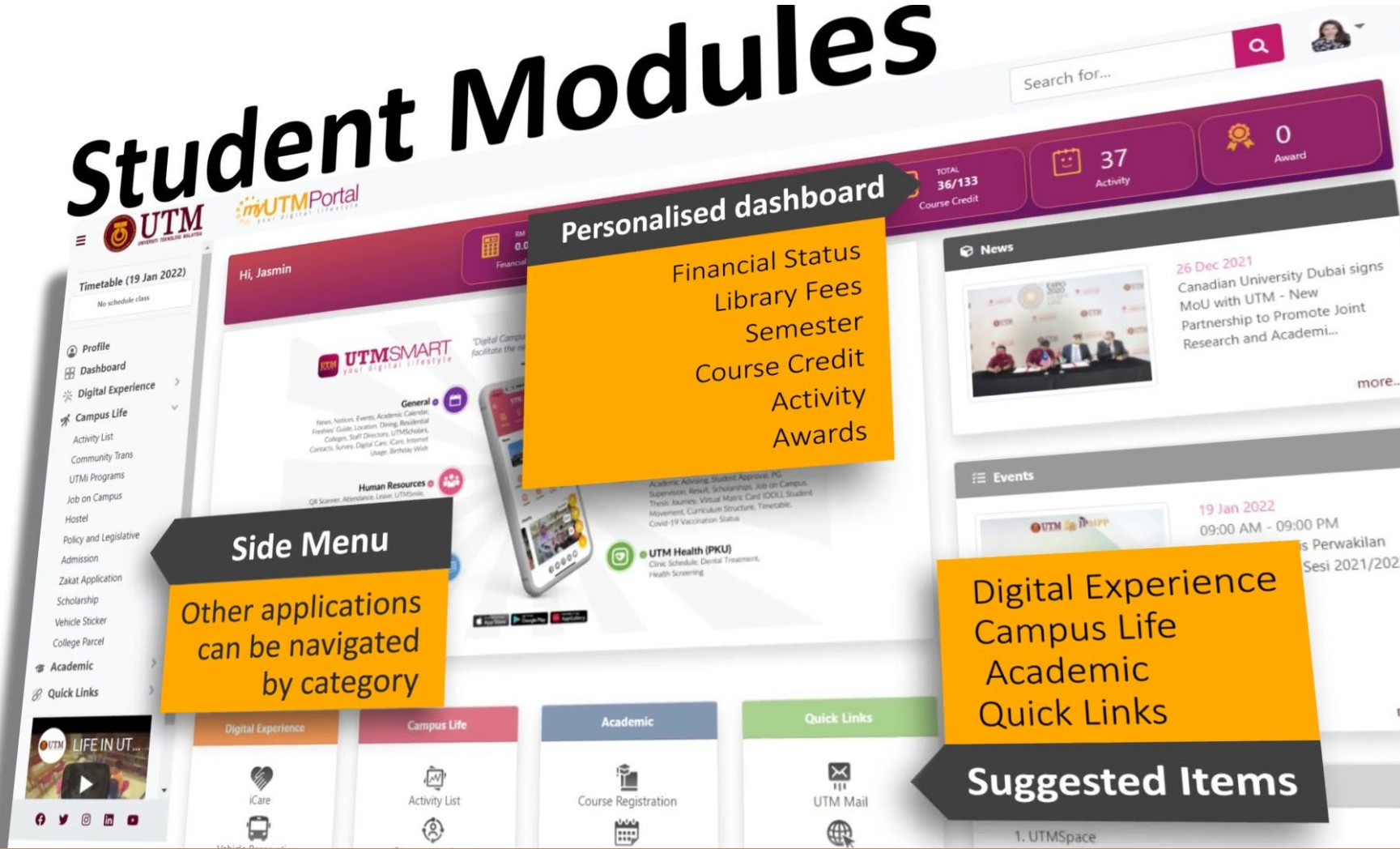


HOW TO ACCESS YOUR OFFICIAL EMAIL ACCOUNT (@graduate.utm.my)

- UTM email platform is **Gmail by Google**.
It Includes all **google suite features** - **Gmail, Drive, Photos, Calendar, Meet and more.**
- Access URL - **<http://mail.graduate.utm.my>** or **<http://gmail.com>**
- Email ID = UTMID e.g: **yourutmid@graduate.utm.my**
(make sure to type your email id with the domain name)
- **Please use this email account for any official affairs - all official announcements will be sent to this email account.**
- Google storage capacity limit: **Student – 15 GB**
- Google storage space covers **Gmail, Google Drive and Google Photos.**
- **Perform housekeeping** for your emails, files and photos in your **Google storage** to **ensure that it meets below the given storage limit.**
- Check your current Google storage status at **drive.google.com/settings/storage**
- If your account **still exceeds its storage limit**, you **cannot send or receive any new emails with attachments.**
- Your **account will be suspended** if you **never log in after 6 months.**
- Termination of student official email: **6 months after the convocation date.**



Student Modules



Fresh new look
simplified layout and navigation

Single Sign On
simply log in once and use all applications



“Digital Campus Lifestyle initiative at UTM, to provide services which complement and facilitate the needs of students, staffs and even visitors”

General +



News, Notices, Events, Academic Calendar, Freshies' Guide, Location, Dining, Residential Colleges, Staff Directory, UTMScholars, Contacts, Survey, Digital Care, iCare, Internet Usage, Birthday Wish

Human Resources +



QR Scanner, Attendance, Leave, UTMSmile, Human Resource, Performance, GCR, Debt Status, Asset Declaration, eBoarding, EC Form, Payslip, Staff Movement, UTMPaytrack, Deduction, UniShare, Vehicle Sticker, Survey, Digital Care, Covid-19 Vaccination Status

UTM Library +



Opening Hours, Items on Loan, Fines & Charges, OCEAN, Terms & Conditions



Financial

Student Financial, Charity, Zakat Harta, Miscellaneous Payment, Event Payment, Bill Payment, Disposed Asset



Academic

QR Scanner, Student Attendance, Course List, Academic Advising, Student Approval, PG Supervision, Result, Scholarships, Job on Campus Thesis Journey, Virtual Matric Card (ODL), Student Movement, Curriculum Structure, Timetable, Covid-19 Vaccination Status



UTM Health (PKU)

Clinic Schedule, Dental Treatment, Health Screening



v5.25.2 NEW RELEASE



Microsoft 365
MICROSOFT LIVE ACCOUNT
(@live.utm.my)



IBM SPSS



Matlab - Campus Wide License

Clarivate™
EndNote™



Mathematica - Campus Wide License



Adobe® Creative Cloud™

LOGIN TO MyUTM PORTAL (<https://my.utm.my>)
CLICK → SOFTWARE CENTRE

HOW TO ACCESS YOUR MICROSOFT 365 SUITE USING YOUR MICROSOFT LIVE ACCOUNT (@live.utm.my)

- Latest version of Microsoft office M365 for students.
- The **Microsoft 365 suite consists of Word, PowerPoint, Excel, OneDrive, Teams** etc including the **Microsoft Windows operating system**.
- Access URL : - <https://www.office.com>
- Email ID = UTMID e.g: yourutm@live.utm.my
- Your **Microsoft live account and a temporary password will be sent to your official email two (2) weeks after course registration at the faculty.**
- The Microsoft 365 suite can be accessed using the Microsoft live account via web, mobile app and local machine.
- Perform housekeeping for your emails, files and documents in your OneDrive storage to ensure that it meets below the given storage limit.



How to Get M365 User Guide

1 Search <https://my.utm.my/>
and click "Software Centre"

2 Click Microsoft 365 User Guide

UTM JB



UTM Network
Login Guide

01 The login page will be automatically loaded

If the login page failed to load, please type at your browser;

For UTMWiFi:
wifi.utm.my

For Wired:
login.utm.my

Please use UTMID account to login

UTMID

Password

Remember me

Log In

Change Password

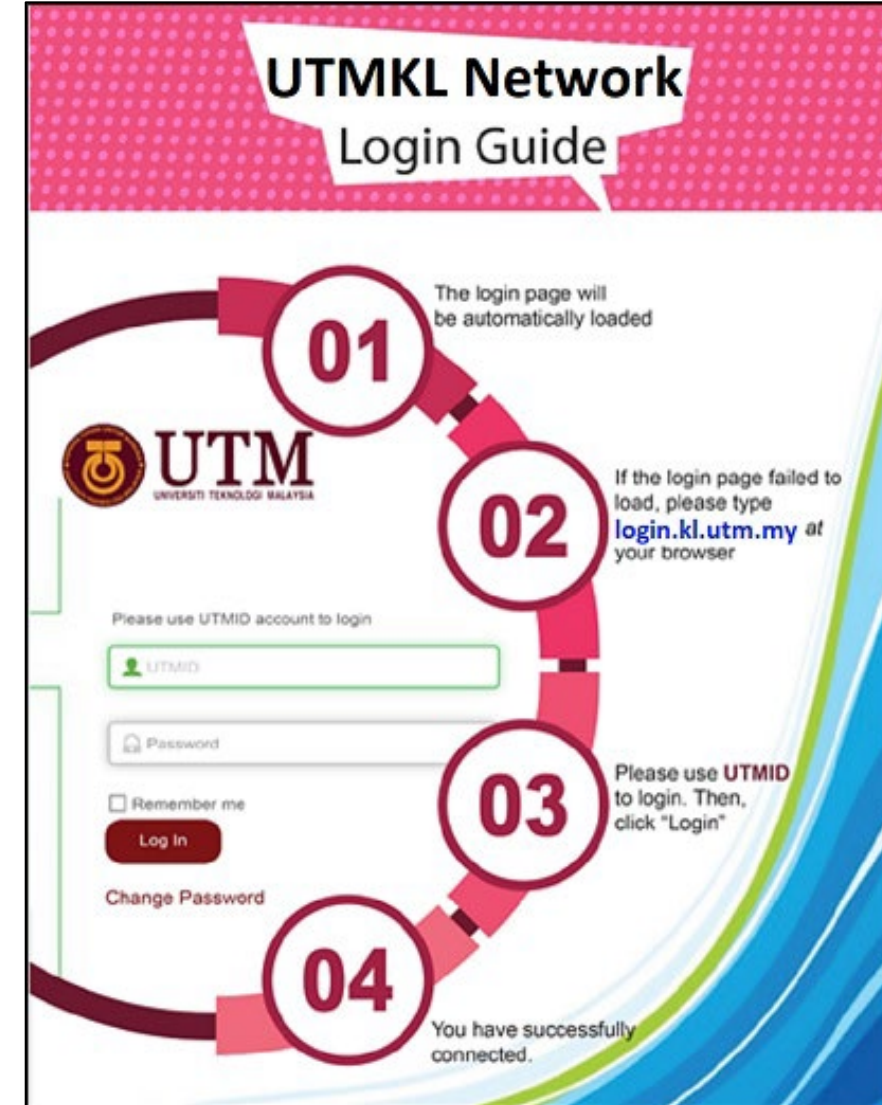
03 Please use UTMID to login. Then, click "Login"

04 You have successfully connected.

UTM NETWORK

- Once you are connected to UTM Network (via Wired or UTMWiFi), a login page will be loaded automatically before you are allowed to access the Internet within the UTM campuses.
- Please use your UTMID to log in.

UTM KL



UTM Network
Login Guide

01 The login page will be automatically loaded

If the login page failed to load, please type login.kl.utm.my at your browser

Please use UTMID account to login

UTMID

Password

Remember me

Log In

Change Password

03 Please use UTMID to login. Then, click "Login"

04 You have successfully connected.

UTMWiFi COVERAGE @UTM



If you have any issues, problems or questions, please contact:

UTM JB



TROUBLE WITH UTMWIFI ?

CALL US:

012 302 7900

-  utmwifi@utm.my
-  utmwifi.utm.my
-  Walk in, Level 1
D07, UTMDigital

UTM KL



TROUBLE WITH UTMWIFI ?

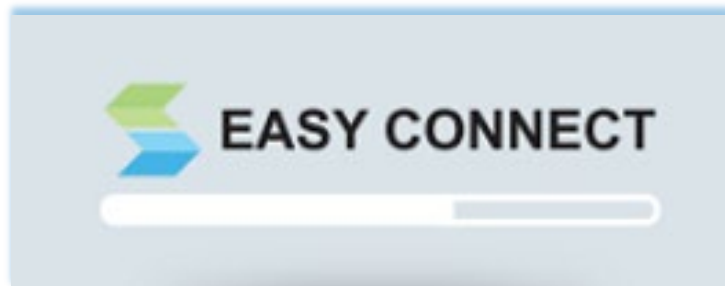
CALL US:

03-2615 4440

-  digitalcare@utm.my
- 
-  Walk in
Digitalcare (Block AB3)

Virtual Private Network (VPN)

- To access UTM intranet services from outside the UTM campus:



UTM | **SSL VPN** | **SOFTWARE INSTALLATION**

01 For first time user, type the displayed URL on your web browser (then, press ENTER). The browser will redirect to download page EasyConnect software.

02 Choose Operating System (OS) type for your device. You must use the right installation file based on the current OS (Windows, Mac or Android) installed on your device.

03 Your device will begin downloading the installation file. Whenever prompted, run the installation file.

04 After the installation is completed, run EasyConnect application. Proceed with log on to the application by using your UTMID and password.

05 Finally, access to your system/web as usual

UTM | **UTM** | **SSL VPN**
UNIVERSITI TEKNOLOGI MALAYSIA

UTMID _____

Password _____

LOGIN

EASY CONNECT

Account Certificate
User Account
PWD Password
Login

SANGFOR
Copyright © 2004 - 2012 Sangfor
All rights reserved.

- ❖ Your **ID and password (UTMID/email/others)** are your responsibility.
- ❖ Your **PC/devices must be free of spyware, adware, viruses and worms** before connecting to the UTM networks.
- ❖ **Prohibited to use our UTM computer /network/ ICT services** for any;
 - **Personal Commercial use;**
 - **Dissemination and access to pornographic and political materials;**
 - **Hacking, network scanning, phishing and data decrypting;**
 - **Use of pirated software;**
 - **Use of gambling apps, gator, hotbar, searchbar, cracked games etc;**
 - **Any unethical affairs.**



UTMDIGITALCARE

What we do support:

We **will assist** with issues on:

- UTMID and email accounts (@graduate.utm.my & @live.utm.my)
- login and access problems to university systems
- systems technical problems
- questions about UTM ICT services & features

We **do provide software user manual** on how to install University licensed software. Please follow the user guides and install it yourself.

We **will help** you **connect your device** to the University's wireless network or you can contact **UTMWifi HELPDESK** regarding this service.



UTMDIGITALCARE What we don't support:

We don't install the licensed software for you.

We don't troubleshoot any problems encountered with UTM licensed software. Users will have to contact the authorized companies to seek help with the problem.

We don't provide hardware, operating system (OS) and software support for personal devices such as computers , laptops or smartphones.

We don't assist with issues associated with system flow or data. You may contact directly to your faculty or owner of the systems.

We don't reset UTMID password. You may reset it yourself by using the UTMID self-reset password facility – <https://utmid.utm.my>.



What should you do

1. Upon getting your UTMID and Official email, for security purposes, do:
 - **Reset your email password**
 - **Reset your UTMID password**
2. **Install UTMSmart (Mobile Apps) – Refer to the Freshies' Guide module.**
3. **Log in to your Student Portal - <https://my.utm.my>**
4. Upon getting your Microsoft Live Account, for security purposes, do **reset your Microsoft live password & log in to your Microsoft 365 account - <https://www.office.com>**



UTMDigital JB

Block D07
Department of Digital Services
Universiti Teknologi Malaysia
81310 UTM Johor Bahru
Johor Darul Takzim, Malaysia



UTMDigital KL

Department of Digital Services
Universiti Teknologi Malaysia
Jalan Sultan Yahya Petra
54100 Kuala Lumpur
Malaysia



Counter Operating Hours

Sun – Wed: 8.30am – 4.30pm
Thurs: 8.30am – 3.00pm
Break Hours : 1.00pm – 2.00pm
Fri – Sat: Closed



Counter Operating Hours

Mon – Fri: 8.30am – 4.30pm
Break Hours : 1.00pm – 2.00pm
(Mon – Thurs)
12.15pm – 2.45pm (Fri)
Sat – Sun: Closed



Call (Digital Care)

(6) 07 533 2136



Call (Digital Care KL)

(6) 03 2615 4440



Email (Digital Care)

digitalcare@utm.my



digitalcare@utm.my



<http://digital.utm.my>



UTMDigital

Some services or **problems are best answered by email**, so you do not need to come physically to DigitalCare UTMDigital as a walk-in user. Do communicate with us using your **UTM official email** only, except for email issues (Please attach the snapshot of your matric card/offer letter).